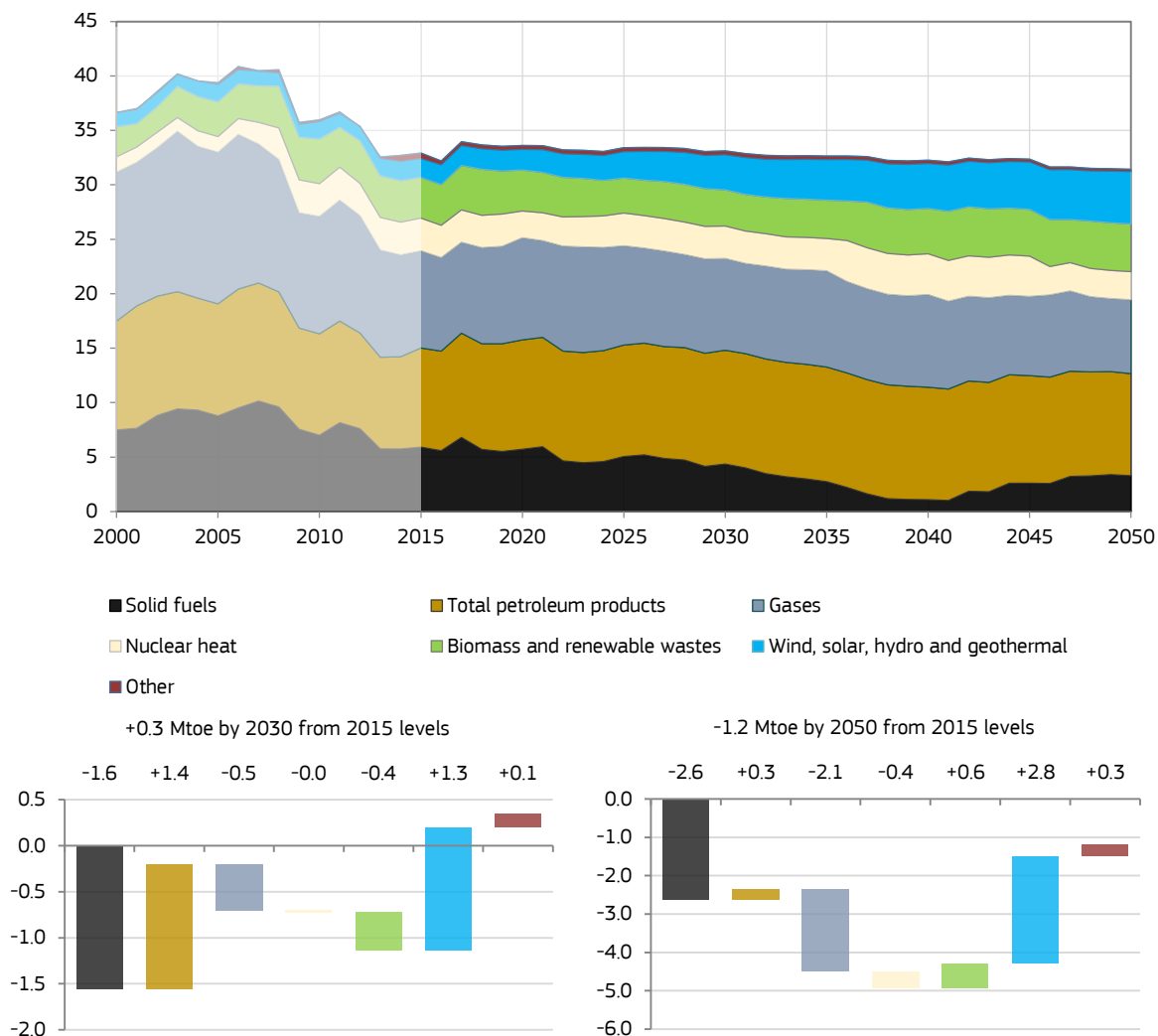

POTEnCIA - Model results overview

Romania

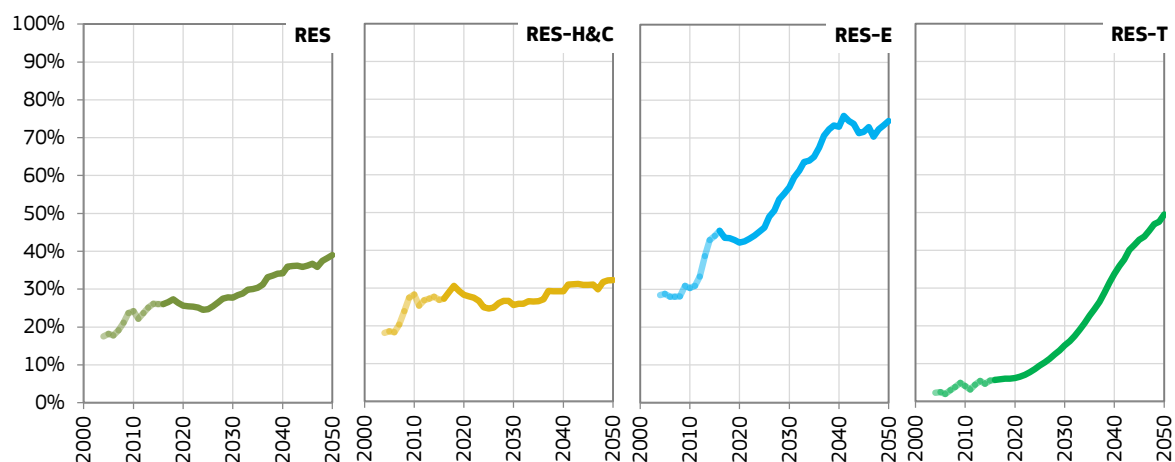
Central_2018 scenario

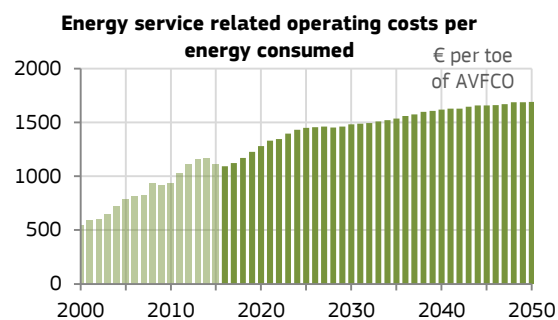
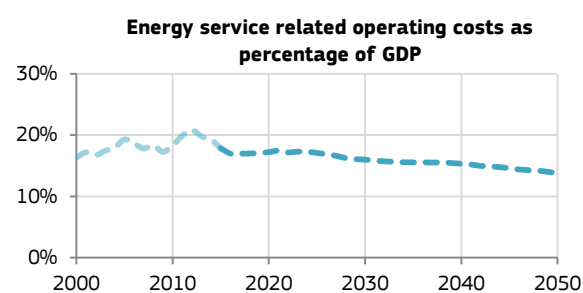
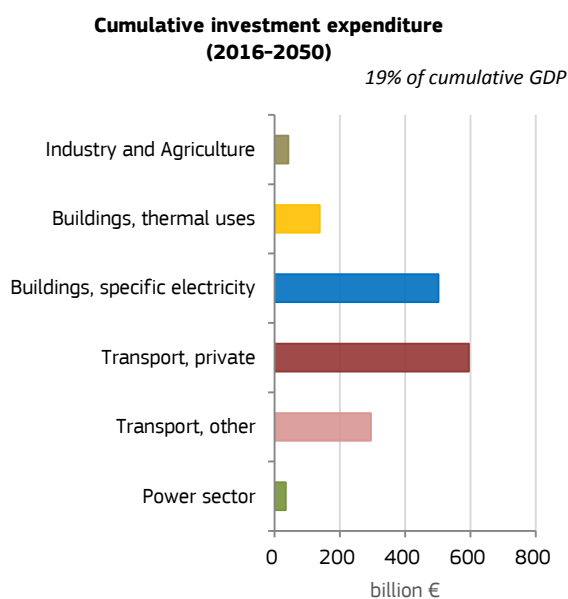
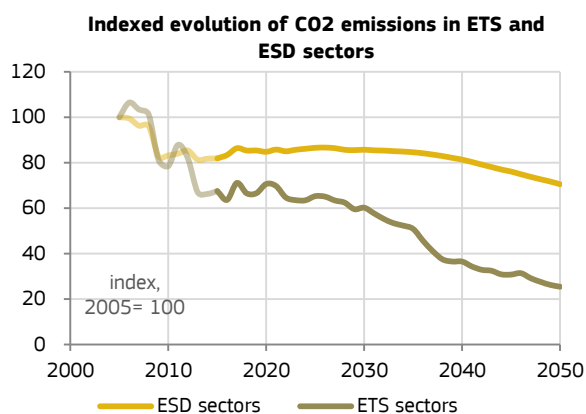
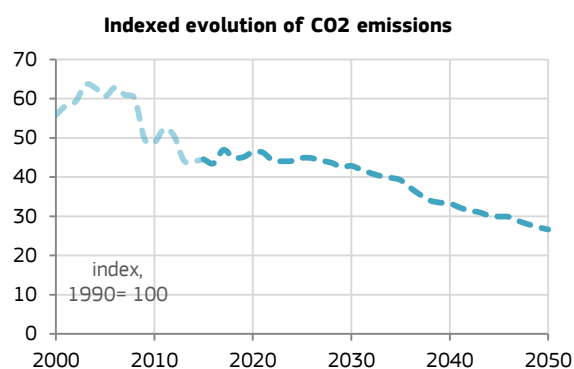
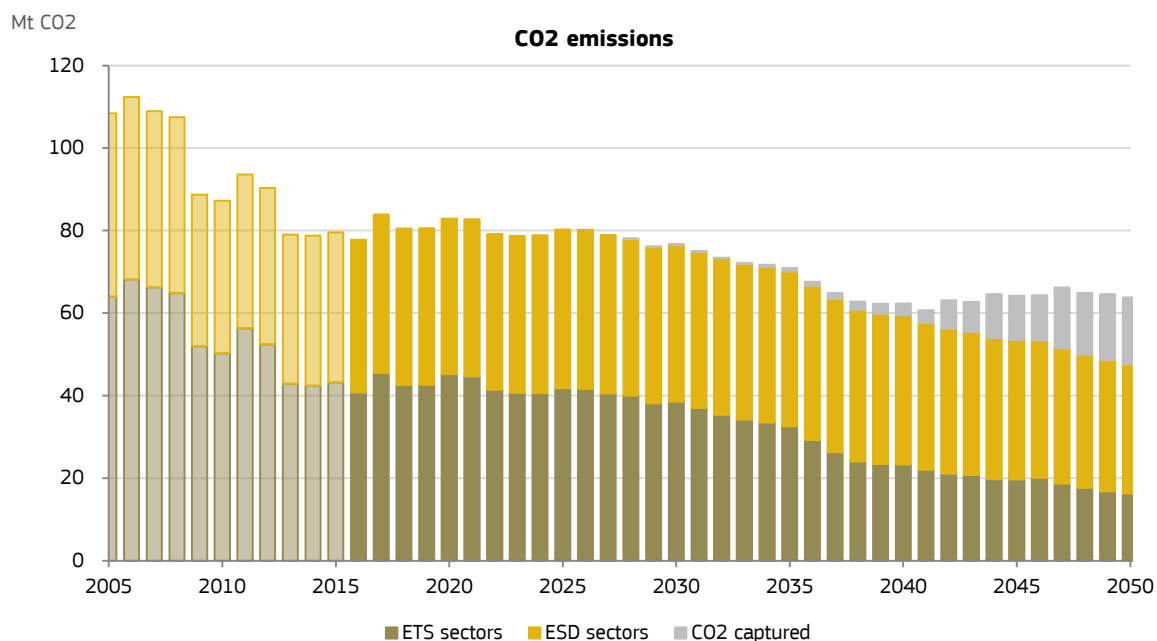
Mtoe

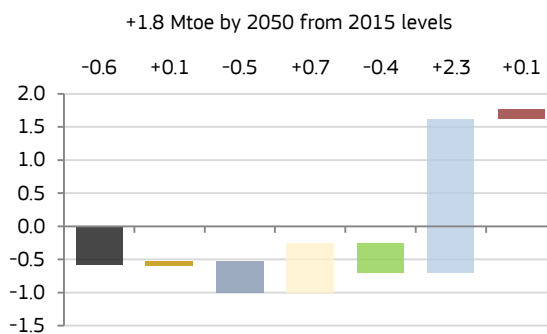
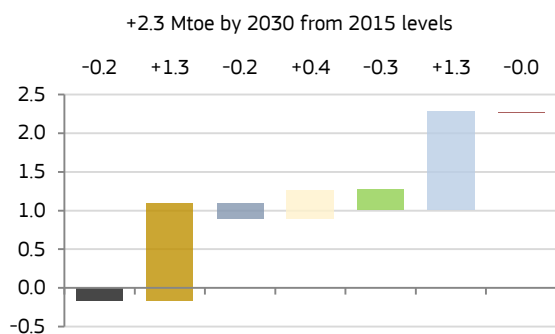
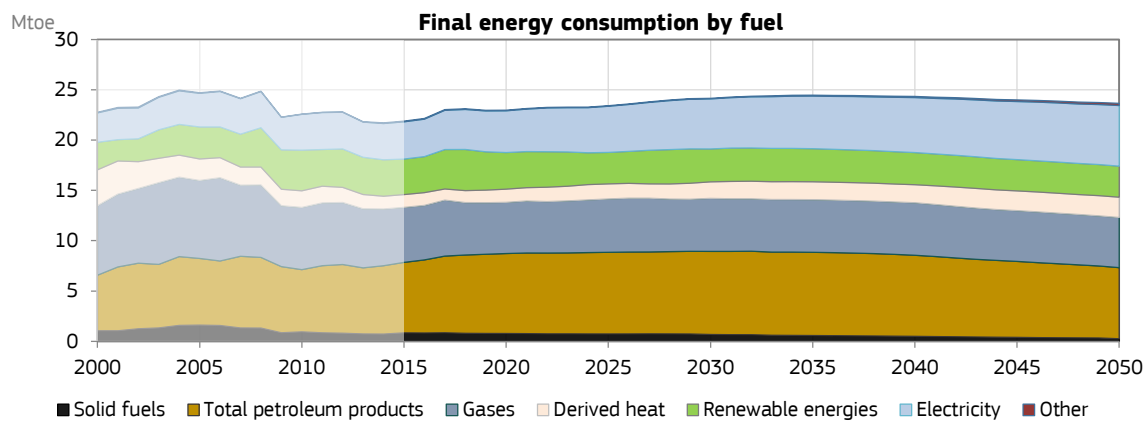
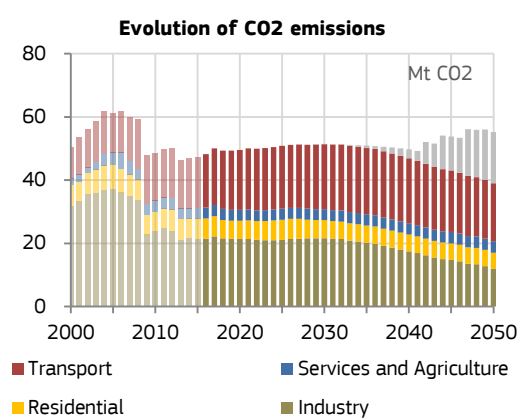
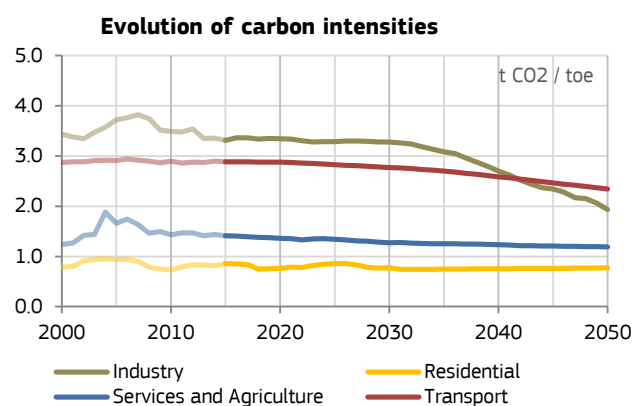
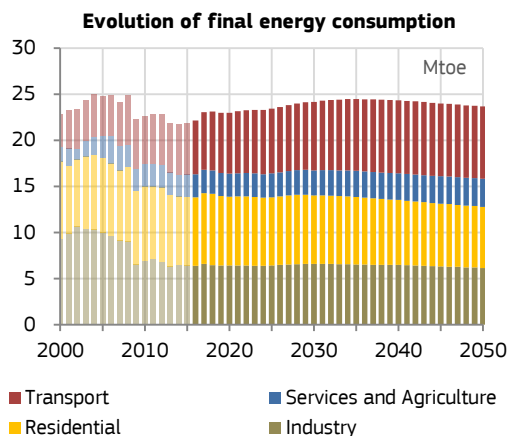
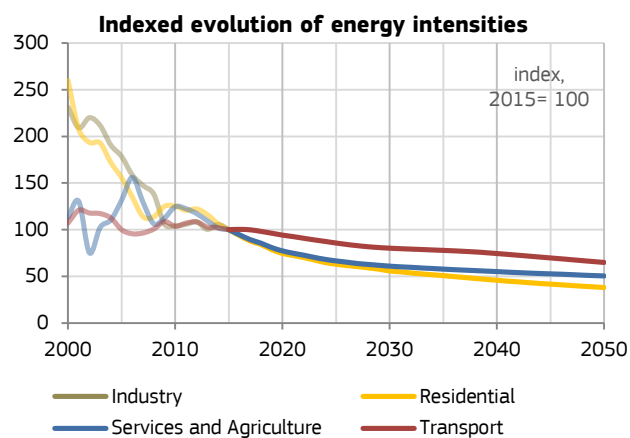
Gross inland energy consumption

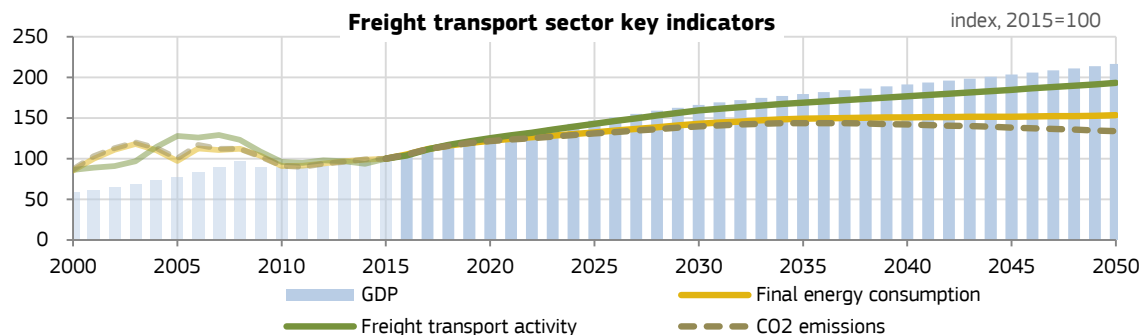
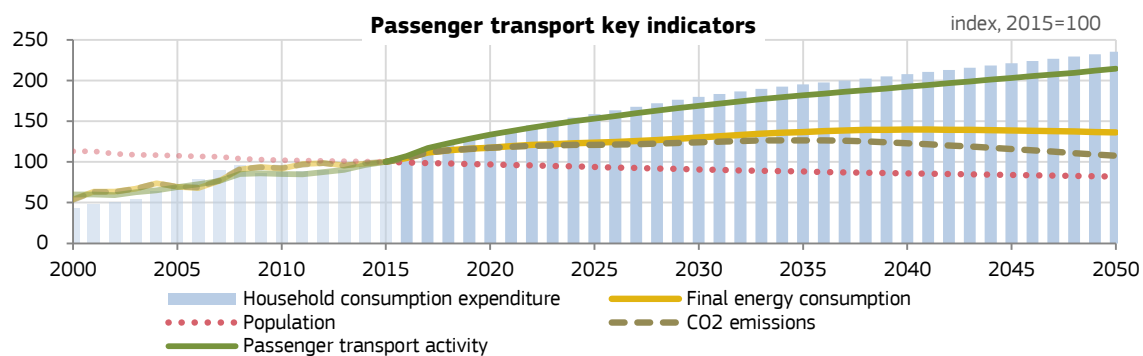
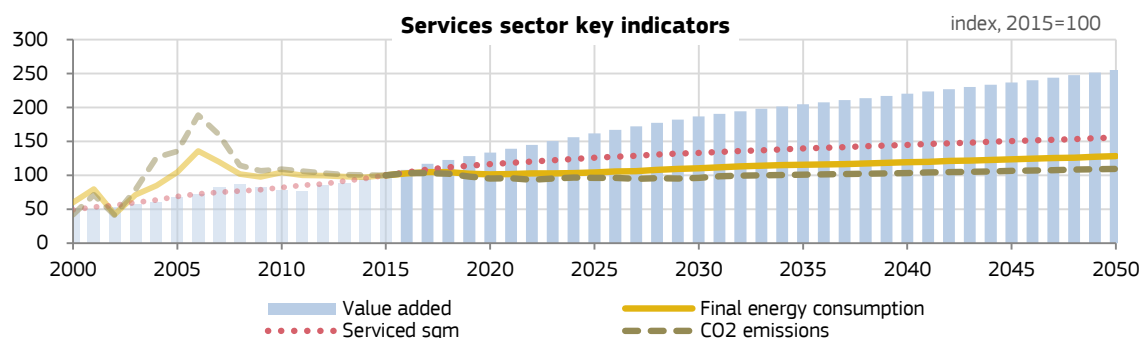
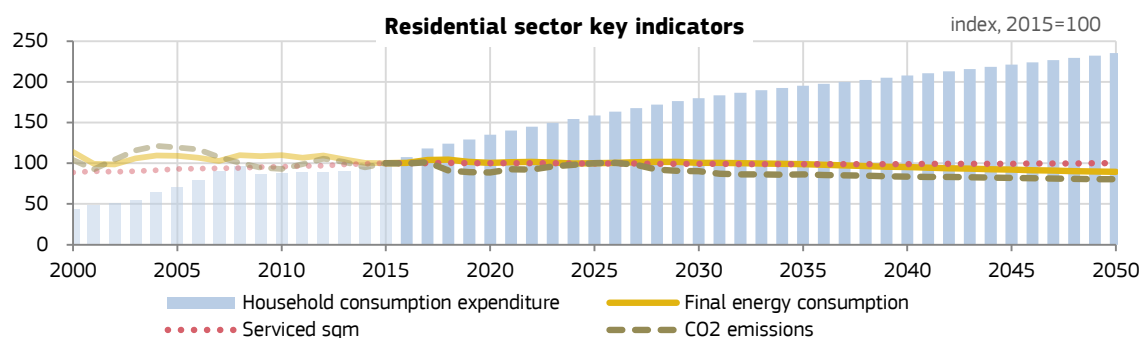
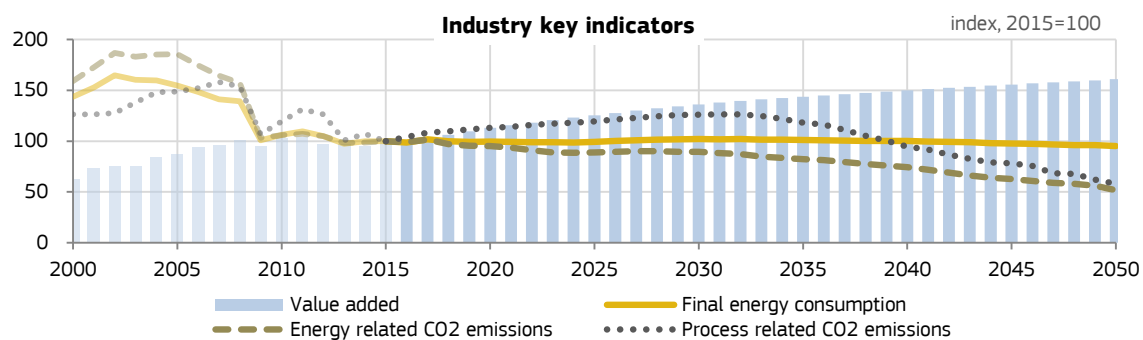


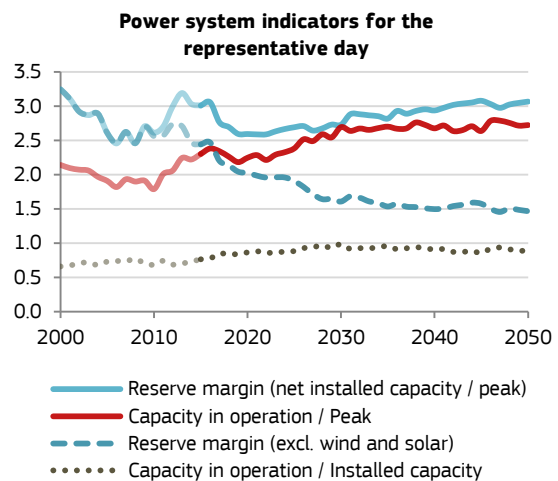
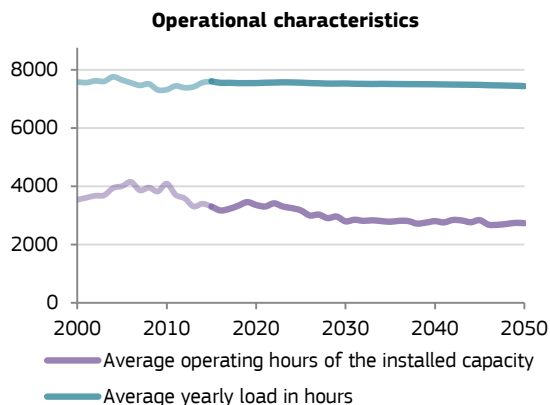
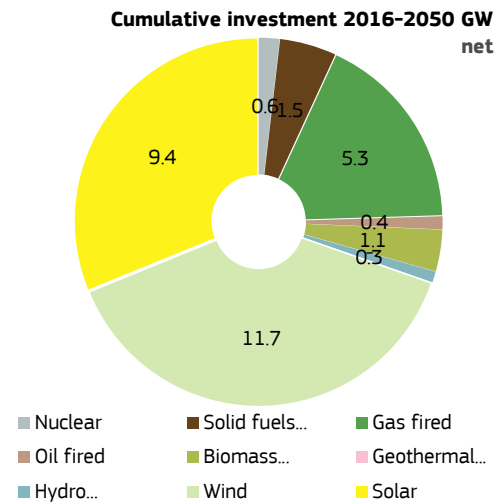
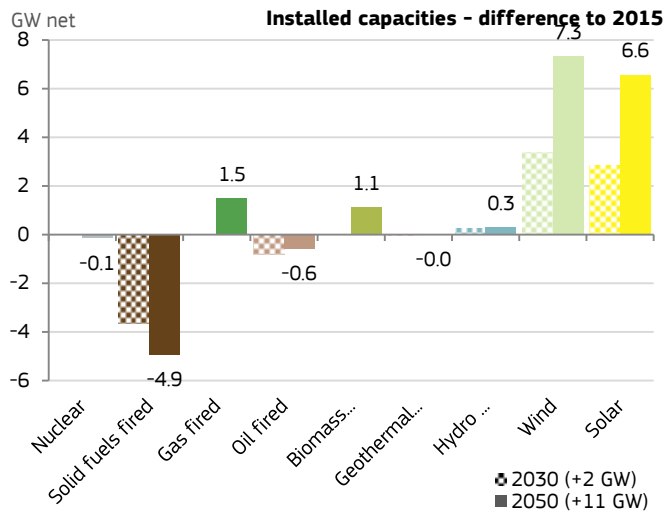
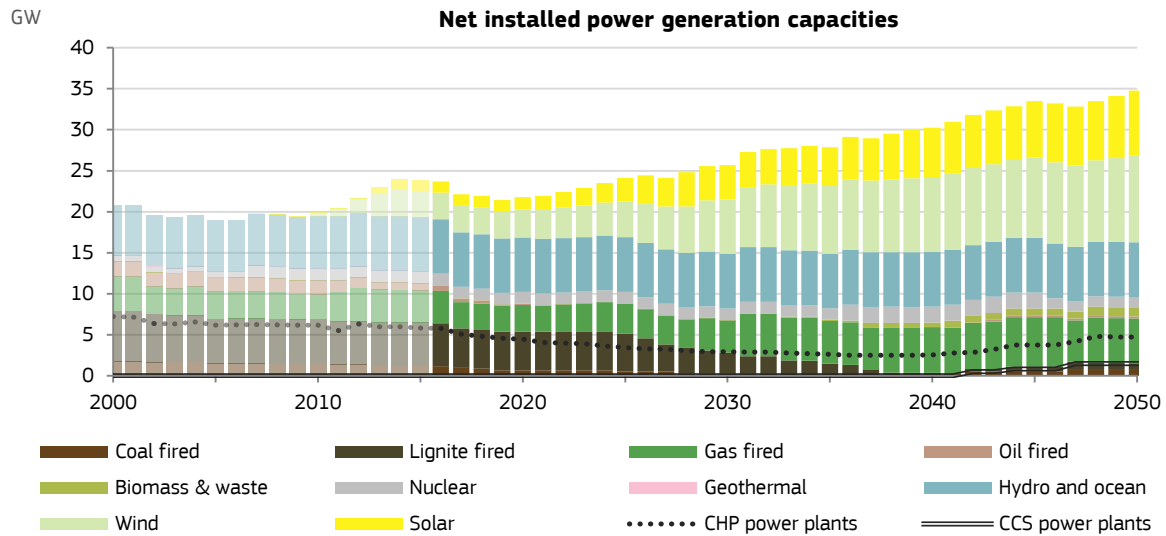
Share of renewable energies

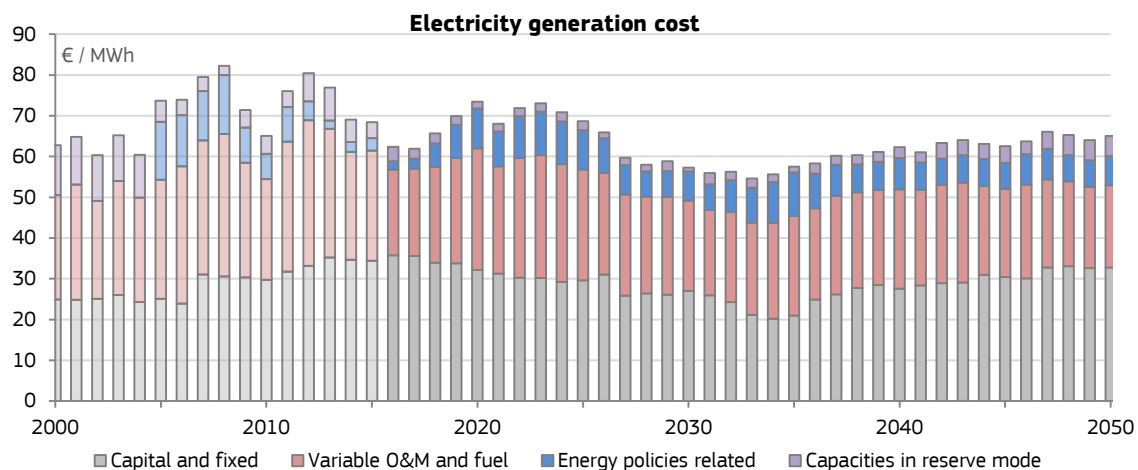
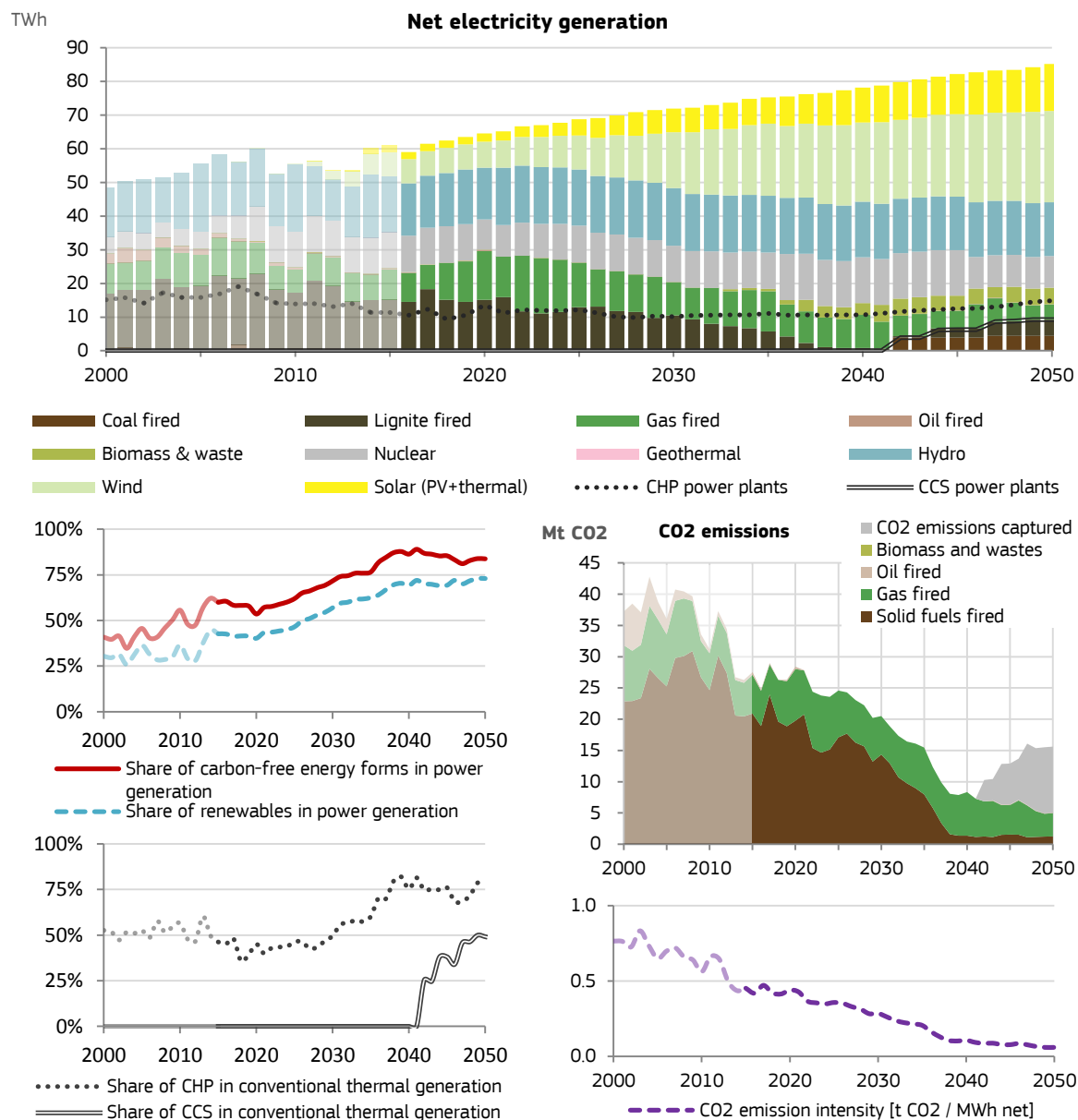






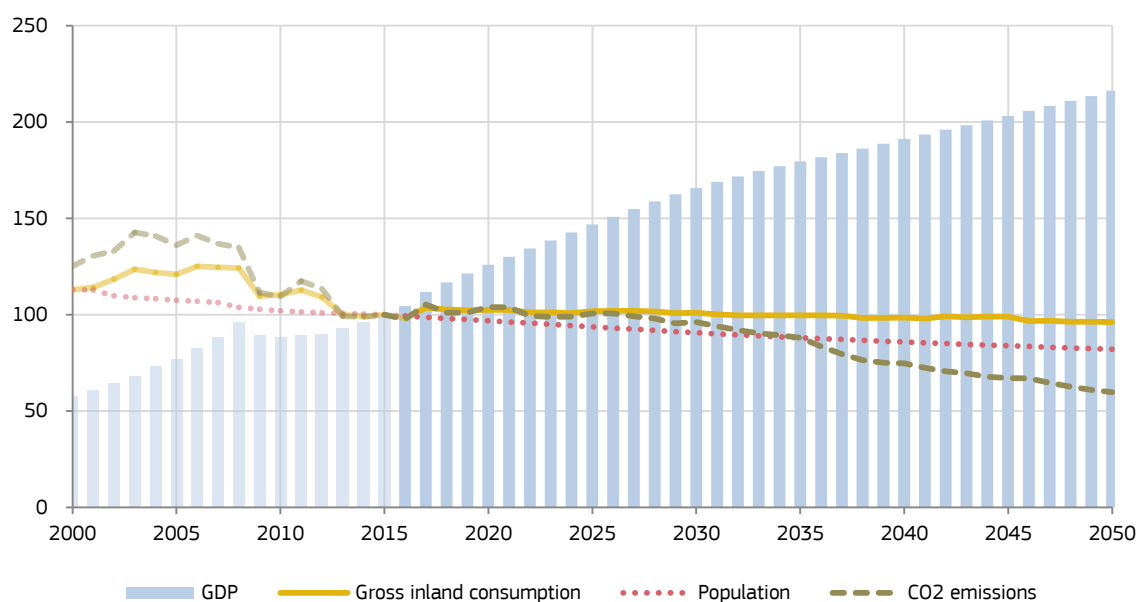






index, 2015=100

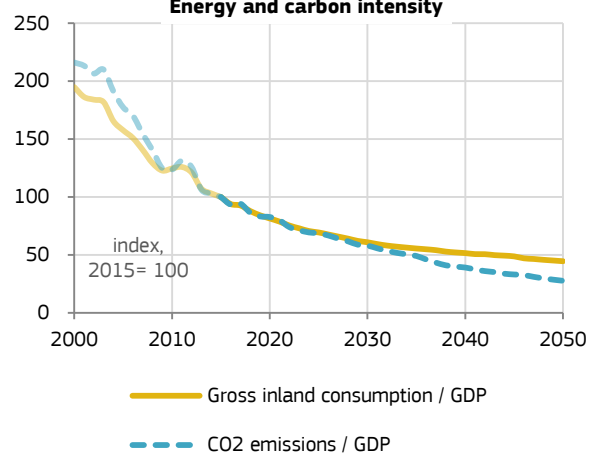
Key indicators of the RO energy system



Key figures concerning the evolution of the Central_2018 - Indicators energy system

| | 1990 | 2005 | 2015 | 2020 | 2030 | 2050 |
|--|-------|-------|-------|-------|-------|-------|
| Final energy consumption [Mtoe] | 40.8 | 24.7 | 21.9 | 23.0 | 24.2 | 23.7 |
| Primary energy consumption [Mtoe] | 57.3 | 36.7 | 31.3 | 32.0 | 31.3 | 29.6 |
| RES [%] - Share of energy from renewable sources | | 18.2% | 26.0% | 25.6% | 27.7% | 39.0% |
| RES-E [%] - Share of electricity from renewable sources | | 28.8% | 44.1% | 42.3% | 56.9% | 74.5% |
| Total CO2 emissions [Mt CO2] (with intern. aviation, without LULUCF) | 178.8 | 108.4 | 79.6 | 82.9 | 76.6 | 47.6 |
| reduction to 1990 | | -39% | -55% | -54% | -57% | -73% |
| Emissions in current ETS sectors [(RO) [Mt CO2] | | 64.0 | 43.2 | 45.2 | 38.5 | 16.3 |
| reduction to 2005 | | | -32% | -29% | -40% | -75% |
| Emissions in current ESD sectors [Mt CO2] | | 44.4 | 36.4 | 37.7 | 38.1 | 31.3 |
| reduction to 2005 | | | -18% | -15% | -14% | -29% |

Energy and carbon intensity



Per capita indicators

